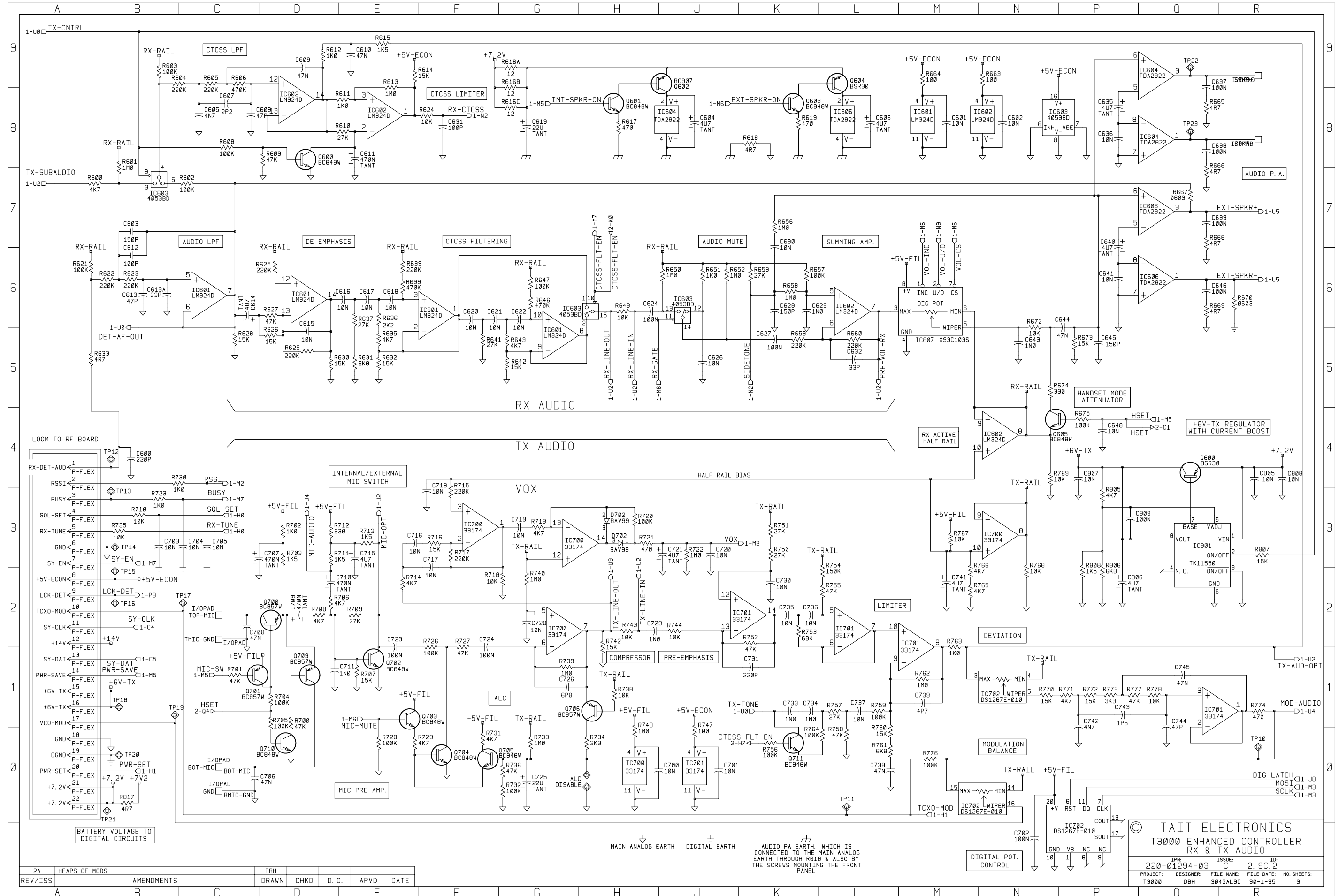
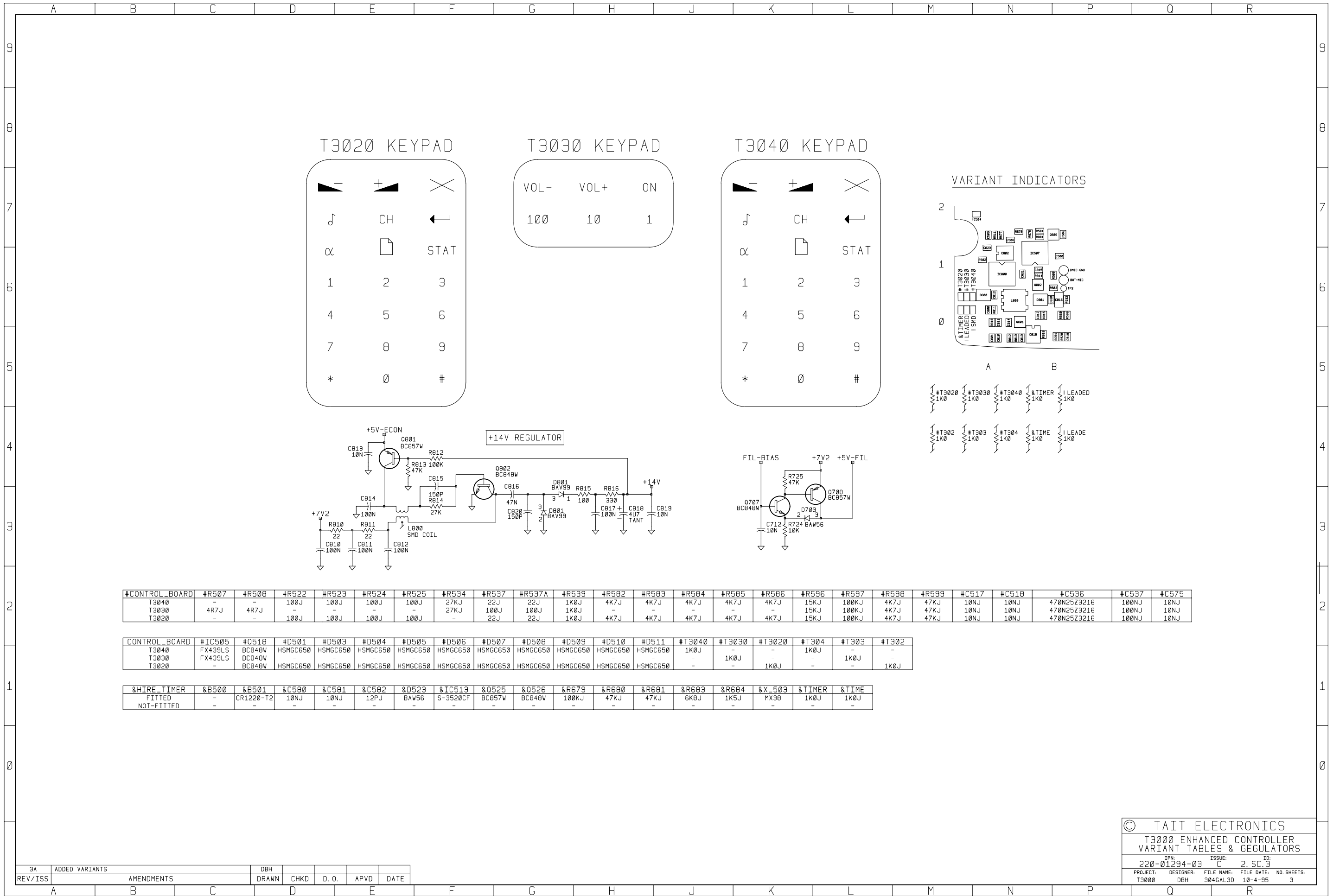


© TAIT ELECTRONICS
 T3000 ENHANCED CONTROLLER
 GATE ARRAY, LCD & DRIVERS
 228-02-94-03 ISSUE: 2 SC. 1
 PROJECT: DESIGNER FILE NAME: FILE DATE: NO. SHEETS: 3
 T3000 DBH 3846AL3C 30-1-95



REV/ISS	AMENDMENTS	DRAWN	CHKD	D. O.	APVD	DATE
2A	HEAPS OF MODS	DBH				

© TAIT ELECTRONICS
**T3000 ENHANCED CONTROLLER
 RX & TX AUDIO**
 TPN: 220-01294-03 ISSUE: 2 SC.2
 PROJECT: T3000 DESIGNER: DBH FILE NAME: 304GAL3C 30-1-95 NO. SHEETS: 3



#CONTROL_BOARD	#R507	#R508	#R522	#R523	#R524	#R525	#R534	#R537	#R537A	#R539	#R582	#R583	#R584	#R585	#R586	#R596	#R597	#R598	#R599	#C517	#C518	#C536	#C537	#C575	
T3040	-	-	100J	100J	100J	100J	27KJ	22J	22J	1K0J	4K7J	4K7J	4K7J	4K7J	4K7J	15KJ	100KJ	4K7J	47KJ	47KJ	10NJ	10NJ	470N25Z3216	100NJ	10NJ
T3030	4R7J	4R7J	-	-	-	-	27KJ	100J	100J	1K0J	4K7J	4K7J	-	-	-	15KJ	100KJ	4K7J	47KJ	47KJ	10NJ	10NJ	470N25Z3216	100NJ	10NJ
T3020	-	-	100J	100J	100J	100J	-	22J	22J	1K0J	4K7J	4K7J	4K7J	4K7J	4K7J	15KJ	100KJ	4K7J	47KJ	47KJ	10NJ	10NJ	470N25Z3216	100NJ	10NJ

CONTROL_BOARD	#IC505	#Q518	#D501	#D503	#D504	#D505	#D506	#D507	#D508	#D509	#D510	#D511	#T3040	#T3030	#T3020	#T304	#T303	#T302
T3040	FX439LS	BC848W	HSMGC650	HSMGC650	HSMGC650	HSMGC650	HSMGC650	HSMGC650	HSMGC650	HSMGC650	HSMGC650	HSMGC650	1K0J	-	-	1K0J	-	-
T3030	FX439LS	BC848W	-	-	-	-	-	-	-	-	-	-	1K0J	-	-	-	1K0J	-
T3020	-	BC848W	HSMGC650	HSMGC650	HSMGC650	HSMGC650	HSMGC650	HSMGC650	HSMGC650	HSMGC650	HSMGC650	-	-	1K0J	-	-	-	1K0J

&HIRE_TIMER	&B500	&B501	&C580	&C581	&C582	&D523	&IC513	&Q525	&Q526	&R679	&R680	&R681	&R683	&R684	&XL503	&TIMER	&TIME
FITTED	-	CR1220-T2	10NJ	10NJ	12PJ	BAW56	S-3520CF	BC857W	BC848W	100KJ	47KJ	47KJ	6K8J	1K5J	MX38	1K0J	1K0J
NOT-FITTED	-	-	-	-	-	-	-	-	-	-	-	-	-	-	-	-	-

3A	ADDED VARIANTS	DBH				
REV/ISS	AMENDMENTS	DRAWN	CHKD	D. O.	APVD	DATE

© TAIT ELECTRONICS
 T3000 ENHANCED CONTROLLER
 VARIANT TABLES & REGULATORS
 IPN: 220-01294-03 ISSUE: C ID: 2. SC. 3
 PROJECT: T3000 DESIGNER: DBH FILE NAME: 304GAL3D FILE DATE: 10-4-95 NO. SHEETS: 3

